

METZ®

Corporate Profile

The brands you trust, trust Metz



Metz Specialty Ceramic Tiles is the ceramic tile division of Metz whose focus is importing and distributing quality European ceramic tiles across Australia. This division has showrooms in Perth, Melbourne, Brisbane & Sydney.

The tile division supplies specialist ceramic tiles for **commercial kitchen** flooring, **aquatic centres** and a broad range of **slip resistant tiles** suitable for many commercial applications, as well as beautiful, aesthetic and practical ceramic tiles.

Commercial Kitchens

A busy commercial kitchen is one of the most demanding work environments. Metz has a comprehensive range of non slip tiles and resinous systems providing long term safety, hygiene and durability.

Some examples of where to use Metz products in Commercial Kitchen projects

- Floor tiling systems
- Floor coating systems
- Wall tiling systems
- Garbage Areas
- Front of House tiling

Client examples:

- McDonalds
- KFC
- Guzman Y Gomez
- Burger Project
- Tetsuya's
- Crown Casino



Aquatic Centres

Metz is the market leader in the specialised tiling systems for commercial swimming pools and aquatic centres. Metz establish the benchmark for long term performance.

Some examples of where to use Metz products for Aquatic Centre projects

- Pool tiling systems
- Gutter linings
- Balance Tanks linings
- Concourses
- Plant rooms
- Chemical storage areas

Client examples:

- Ryde Aquatic Centre
- Gunyama Park Aquatic Recreation Centre
- Pimpama Sports Hub
- Sleeman Sports Complex
- Ian Thorpe Aquatic Centre
- Port Lincoln Leisure Centre



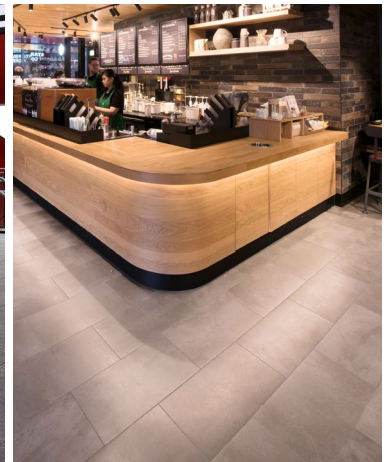
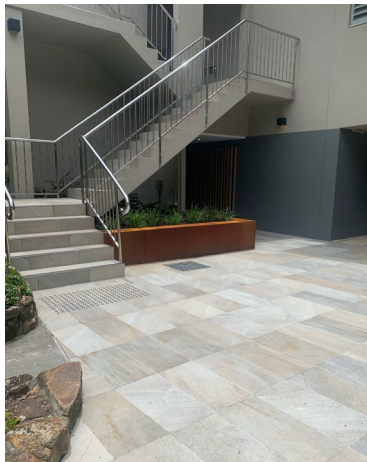


Ceramic & Slip Resistant Tiles

Metz Specialty Ceramic Tiles provide excellent slip resistance, durability and easy maintenance while also offering a range of styles to suit any design aesthetic.

Metz signature MicroGRIP® & NanoGRIP® finishes are the ideal choice for:

- Amenities
- Aged Care & Hospitals
- Transport Infrastructure
- Shopping Centres & Retail
- Concourses and high traffic areas



Ventilated Facades

Metz Presto is eco-friendly, low maintenance and won't fade, rot or burn.

Its simple installation system features the ultimate in aesthetic choices - colours, styles, shapes, profiles.



Building Integrated Photovoltaics (BiPV)

Introducing fully customisable Photovoltaic Glass that offers energy generation and carbon savings without sacrificing aesthetics.

Onyx Solar is the world's leading manufacturer of transparent photovoltaic (PV) glass for buildings.

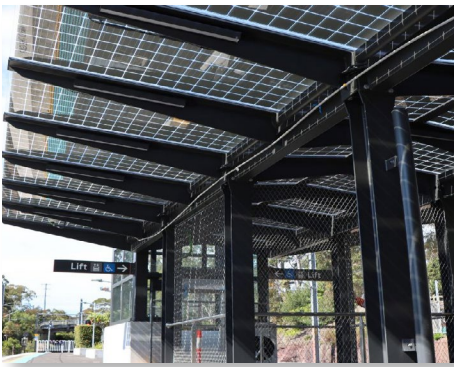
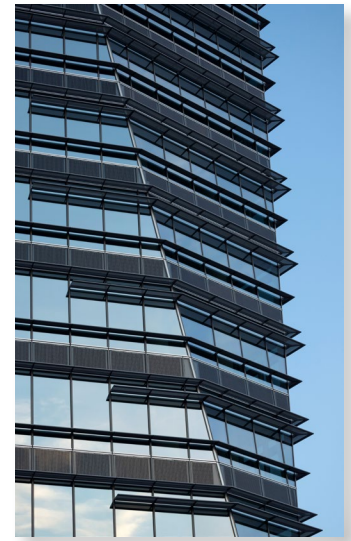
Aesthetic Photovoltaic Solutions for buildings that generate their own power

Crystalline Silicon (c-Si)

- Mono Crystalline
- Poly Crystalline
- Solid Colours for Cladding - White, Corten Steel, Terracotta, Blue etc.
- Walkable floor panels
- Acid etch finishes

Amorphous Silicon (a-Si)

- Translucencies - Dark, Low, Medium, High
- Skylights
- Facades
- Double glazing
- Colours

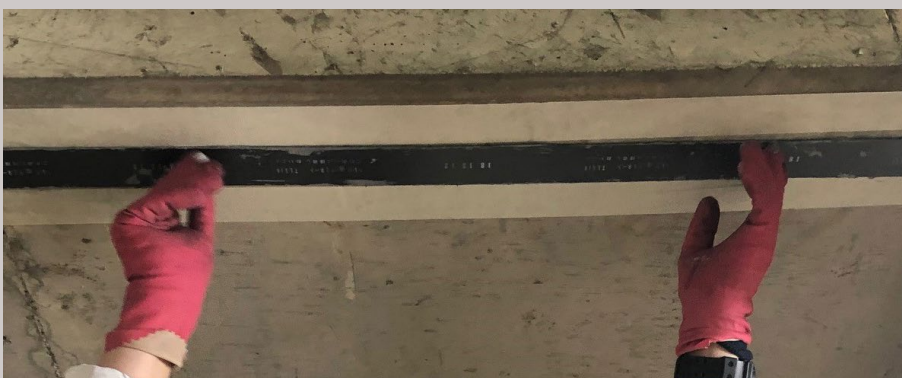


Carbon Strengthening

Carbon is the best solution for the effective repair and reinforcement of any type of structure.

Some examples of where to use Metz materials for carbon strengthening

- Slab & beam strengthening
- Post fitting to slab openings
- Walls, chimneys
- Bridge decks, beams
- Box culverts
- Timber & steel structures



SPECIALTY CONSTRUCTION MATERIALS

Metz Specialty Construction Materials is the materials division of Metz which manufactures and supplies specialised materials for **acid protection, industrial flooring, pool & kitchen tile fixing systems.**

Metz can supply a large range of products which when combined, provide a fully warranted solution to any project.

Acid Protection

A complete range of acid protection solutions are offered including acid bricks, tiles and a wide variety of coatings.

Some examples of where to use Metz materials for Acid Protection

- Oil & metal refineries
- Chemical plants
- Power stations
- Wastewater network
- Explosives facilities
- Fertiliser plants

Client examples:

- Orica
- BHP
- Albright & Wilson
- PASAR
- Hydromet
- Bluescope



Industrial Flooring

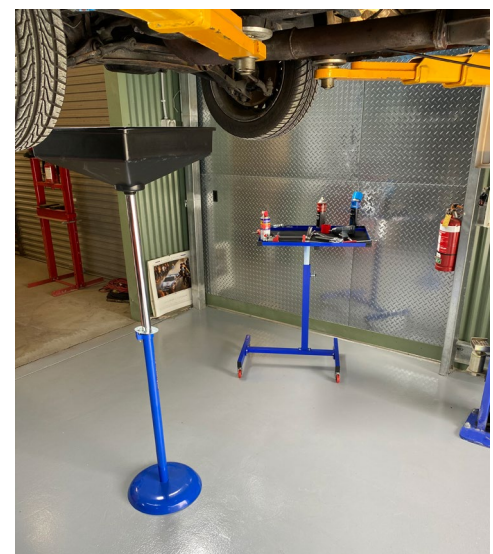
Metz has a large selection of Industrial floor solutions for the harshest physical and chemical environments.

Some examples of where to use Metz materials for Industrial Flooring

- Food factories
- Breweries
- Bottling plants
- Glass manufacturing
- Plant rooms
- Workshop flooring

Client examples:

- Carlton United
- Arnotts
- Coca Cola
- Heineken
- Industrial Galvanizers
- MAN Diesel



Metz Project Services is our site installation division. Unlike most of our competition Metz is capable of supplying and installing all the materials we manufacture and/or import. This ability means we can either offer a unique supply and installation warranty, or we can offer unsurpassed practical technical support to other installers from experienced staff who have actually used our materials on site.

This ability also means that when supporting our products in Australia or overseas Metz staff have first hand knowledge of how our materials behave in the real world, not just in pristine laboratory conditions.

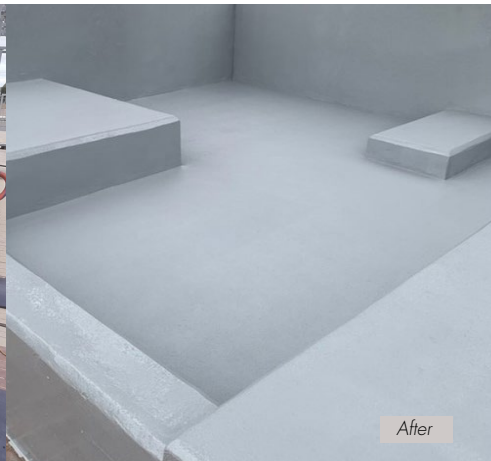
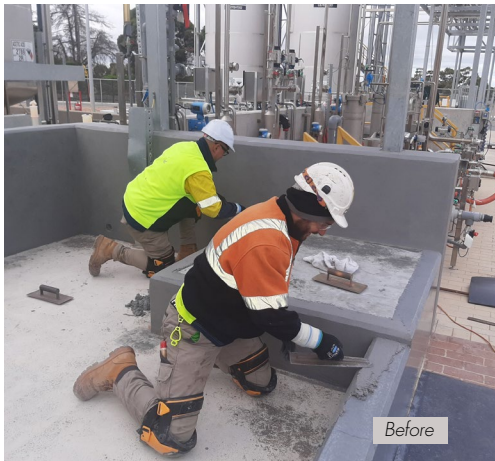
From minor repair work to major installation the Metz Project Services team has the capability to supply and install our products.

Coatings

A broad range of coatings for any specialised application.

Some examples of where to use Metz materials for coating.

- Industrial flooring
- Commercial kitchens
- Containment bunds
- Balance tanks
- Drainage pits

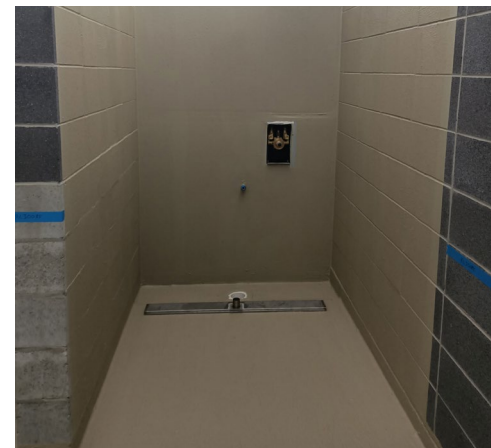


Waterproofing

As part of your coating or tiling project Metz can install compatible, fit for purpose waterproofing beneath the wearing surface.

Some examples of where to use Metz materials for tiling.

- Balconies
- Commercial kitchens
- Swimming pools
- Balance tanks
- Containment bunds
- Bathrooms/public amenities



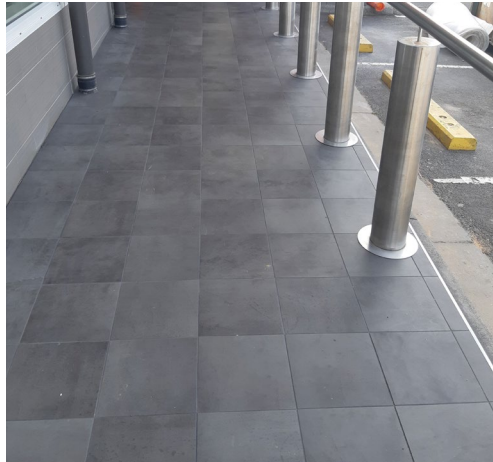


Tiling

Single point of responsibility supply and installation service.

Some examples of where to use Metz materials for tiling.

- Food and beverage
- Aquatic centres
- Industrial flooring
- Acid protection
- Corrosive environments



Case Study



The drain & surrounding floor areas at this food production facility were heavily corroded and in need of urgent repair.

A saw cut was made on each side of the drain and all damaged concrete was removed. Area was then cleaned and prepared.

New drain frames were then installed and repair action comprised:

- One coat of Metz Epoxy Primer to all areas.
- Backfilled large cavities in the existing concrete with Metz 10 epoxy concrete.
- Installed Metz 33-VG epoxy render to create the original curvature of the drain.
- Install Metz 33-TG epoxy topping to the surrounding floor areas above the drain incorporating a slip-resistant finish.
- Apply 4HB-EN epoxy novolac grey seal coat to all areas.



Metz was founded in Melbourne on the 25th of June 1953 and has since that time been a manufacturer and supplier of specialist building materials.

Our core products in 1953 were acid and abrasive resistant materials.

Today acid resistance remains a key niche area, however, the business has diversified to include many other specialty areas. The ceramic tile division imports quality European tiles for commercial kitchens, community aquatic centres and multiple commercial and residential projects. Our facades division focuses on ceramic facades, Building Integrated Photovaltaics (BiPV), GRC and Aluminium solutions.

Metz remains a proudly Australian owned company headquartered in Sydney. Our Quality Accredited manufacturing plant is located in Melbourne, our tile divisions distribution centre and our Head Office are in Sydney.

The ability to supply, and where required, install our materials makes the Metz offering in Australia unique.

Metz exports our specialty materials throughout Asia, the Pacific and to the Middle East.



METZ MATERIALS MEASURE UP!

667 feet up, in fact — from base to top of this, the tallest chimney in the southern hemisphere . . .

Measure up, too, to the very rigid specifications for this job to ensure maximum corrosion resistance under extreme conditions. In the construction of this chimney, designed and built by Tileman and Co. Australia Pty. Ltd. for Electrolytic Refining & Smelting Company of Australia Pty. Ltd. at Port Kembla, Metz supplied the following materials:

No. 9A Acid Resistant Cement, for top inspection floor;
No. 7C Acid Resistant Cement, throughout shaft lining;
No. 23A Compound, for coating all interior surfaces of reinforced concrete shaft.

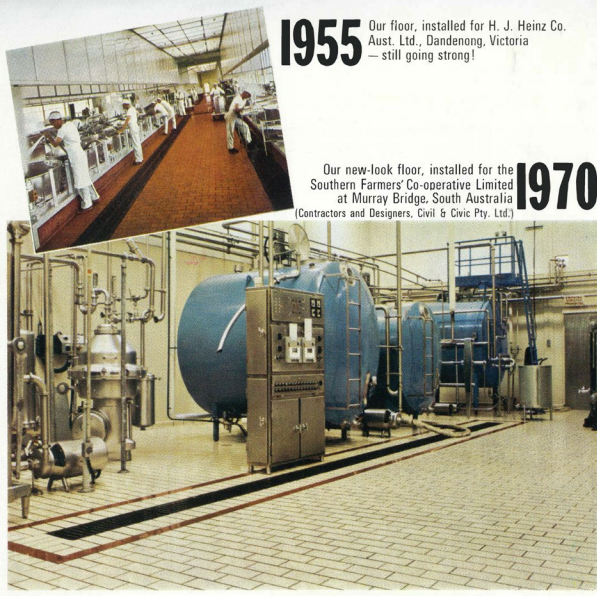
HATHERNWARE
Acid Resistant Staffordshire Blue Bricks, for top inspection floor; and
Thermal Shock Resisting Chemical Stoneware Bricks, throughout shaft lining.

THE CORROSION RESISTANCE OF YOUR FLOORS, DRAINS, TANKS, TOWERS, etc., depends on the quality of the materials and workmanship employed. That's where our many years' experience of corrosion-resistant construction can help you in the

CHEMICAL, STEEL, ENGINEERING & FOOD INDUSTRIES

METZ
and Company Pty. Ltd.
Head Office: 50 Ricketts Road, Mt. Waverley, Victoria, 3149. Tel. 544 3844
N.S.W. 245 Pacific Highway, North Sydney, 2060. Tel. 92 4338
W.A. Railway Rd., Subiaco, 6008. Tel. 81 2844

Reprinted from AUSTRALIAN CORROSION DIRECTORY M10



1955 Our floor, installed for H. J. Heinz Co. Aust. Ltd., Dandenong, Victoria — still going strong!

1970 Our new-look floor, installed for the Southern Farmers' Co-operative Limited at Murray Bridge, South Australia (Contractors and Designers, Civil & Civic Pty. Ltd.)

Colourful Corrosion-Resistant Flooring

Note the smart, clean, new look in our acid-resistant flooring! Modern colours, including Buff, Grey-white, light Brown, dark Brown and Red. All with the same time-tested corrosion-resistant qualities that have proven Acalor floors to be the best proposition in the long run for utmost serviceability with the minimum of maintenance. Phone us to see our new sample range — guaranteed to colour your thinking on corrosion-resistant flooring!

METZ & CO. PTY. LTD.
50 Ricketts Road, Mount Waverley, Victoria, 3149 Telephone: 544 3844.
245 Pacific Highway, North Sydney, N.S.W., 2060. Telephones: 92 4338, 929 9343.

Reprinted from Butter Fats and Solids Journal, June 1970

Offices:

Head Office & Distribution Centre

27-29 Liberty Road, Huntingwood NSW 2148

Melbourne Office and Manufacturing Plant

6 University Place, Clayton North VIC 3149

Brisbane Office

Unit 16, 42 Smith St, Capalaba QLD 4157

Ceramic Tile Galleries: appointment recommended

Sydney

Unit 36, 69 O'Riordan St, Alexandria NSW 2015

Melbourne

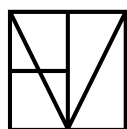
108 Gipps St, Collingwood VIC 3066

Perth

993 - 995 Hay St, Perth WA 6000

Brisbane

124 Petrie Tce, Petrie Terrace QLD 4000



metz.net.au

metztiles.com.au

Metz Specialty Materials Pty Ltd
Metz Project Services Pty Ltd