

BB FIBERBETON GLASSFIBRE REINFORCED CONCRETE



UNIQUE DESIGN WITH ENDLESS POSSIBILITIES

Through design and manufacturing we help architects, entrepreneurs, and builders create unique, durable, and sustainable facades.

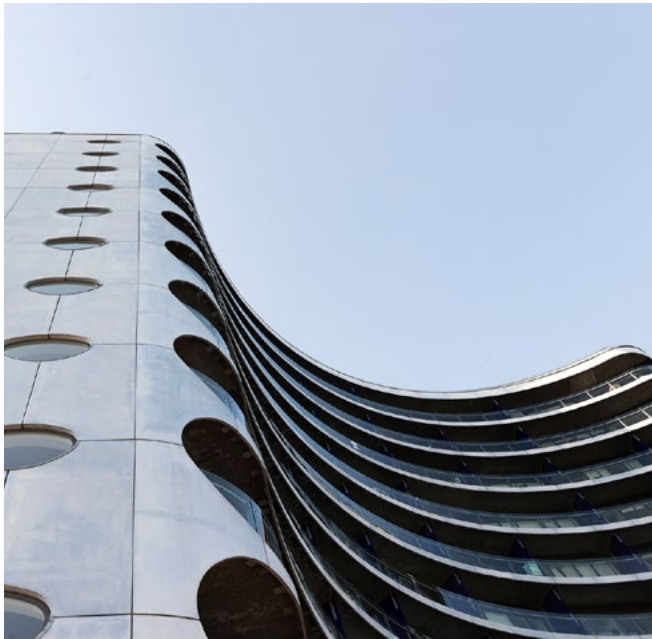
BB fiberbeton work with glassfibre reinforced concrete (GRC or GFRC) to produce durable, lightweight, and formable cladding. Design freedom when working with GRC offers versatility and endless possibilities.

GRC is a sustainable material with a durable lifespan of more than 100 years. Environmentally friendly production processes without toxic materials and a low consumption of energy is backed up by BBf's 2021 EPD (Environmental Product Declaration).

GRC is made up of white cement, fine aggregates and reinforced with glassfibres. GRC has a significantly higher flexural and tensile strength compared to traditional concrete. Elements are manufactured using a special spray-technique that allows for low water/cement-ratio, minimal thickness, and high strength properties. With long durability, lightweight, and great formability, GRC is suitable for both new constructions and renovation projects.

BB fiberbeton specializes in GRC and are one of the leading manufacturers worldwide. BB fiberbeton is as a Full Member of the international GRC association GRCA and the status as a Full Member entails a third-party validation regarding resources, equipment, and labour to consistently design and manufacture high quality products.





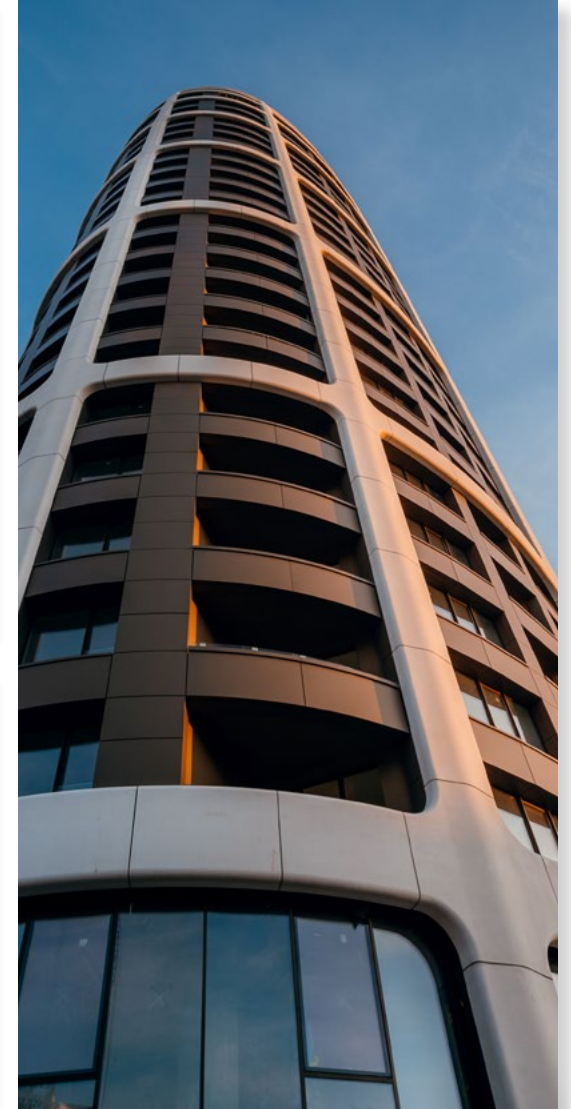
FORMABLE DESIGN

GRC is an immensely formable and shapeable material, providing the freedom to design beautiful and exciting geometries.

GRC offers greater versatility due to its superior compressive and tensile strengths and its flexural properties.

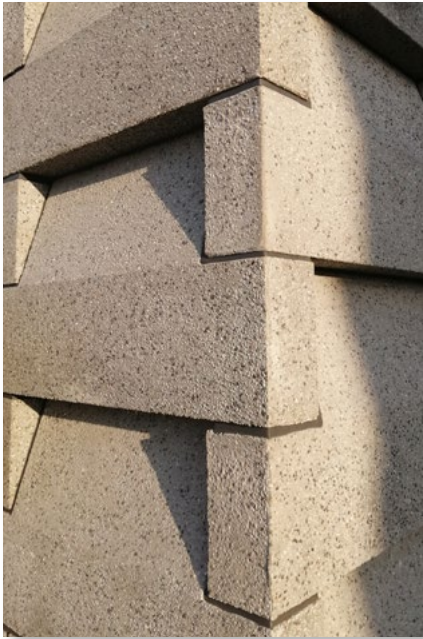
The formable and versatile properties of GRC makes it excellent for creating innovative and futuristic architectural designs while providing the possibility of recreating various style and designs needed for a restoration projects.





Architecture firm:
Zaha Hadid Architects

Project:
SkyPark, Slovakia



SURFACES, TEXTURES & COLOURS

- Coloured GRC
- Exposed aggregates
- Surface patterns

If you can imagine it...

We have an endless array of colour, surface and textures to suit.

